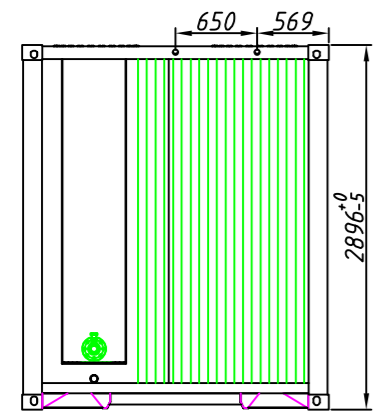
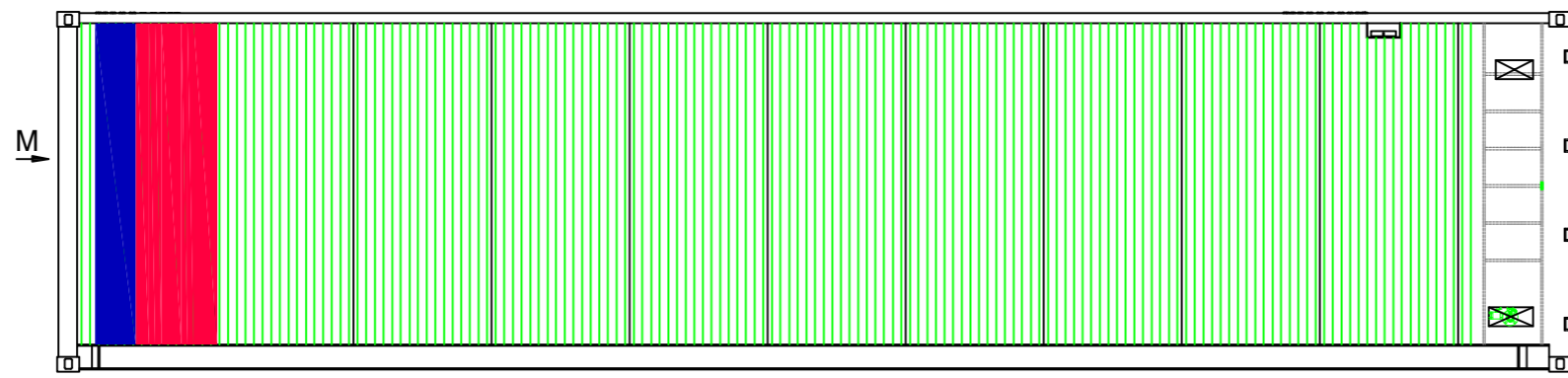


VIEW OF O

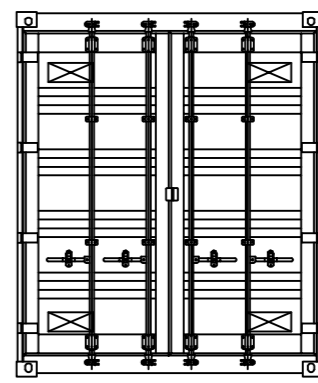
↓ O



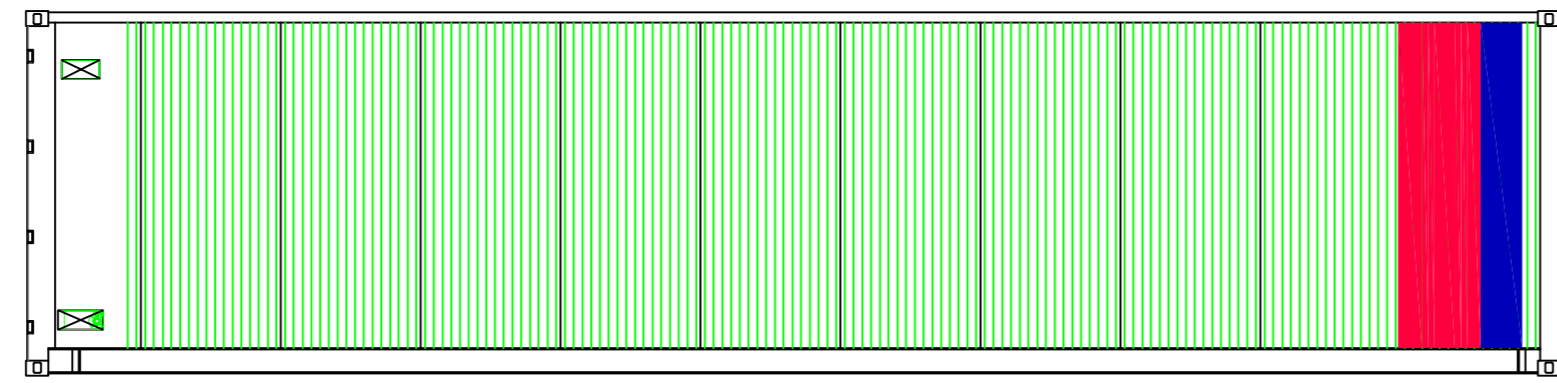
VIEW OF M



VIEW OF Y



VIEW OF X

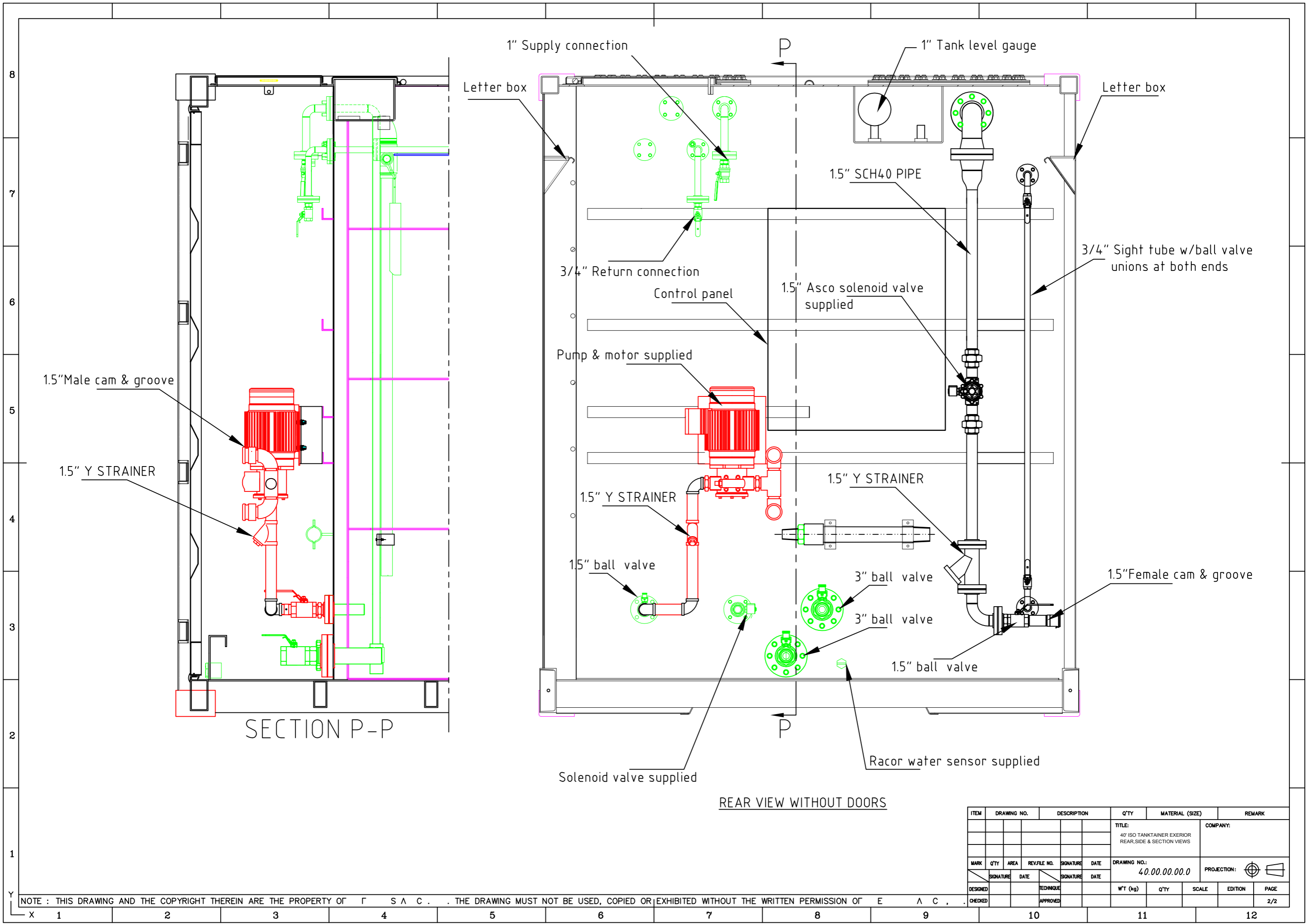


VIEW OF Z

CLASSIFICATION		DIMENSION			
EXTERNAL	LENGTH	12,192	+0 -10mm	40' 0"	+0 -3/8"
	WIDTH	2,438	+0 -5mm	8' 0"	+0 -3/16"
	HEIGHT	2,896	+0 -5mm	9' 6"	+0 -3/16"
INNER TANK	LENGTH	11,315	+0 -10mm	37' 1 11/64"	+0 -3/8"
	WIDTH	2,218	+0 -5mm	7' 3 17/64"	+0 -3/16"
	HEIGHT	2,680	+0 -5mm	8' 9 28/64"	+0 -3/16"
DOOR OPENING	WIDTH	2,326	+0 -5mm	7' 7 33/64"	+0 -3/16"
	HEIGHT	2,580	+0 -5mm	8' 5 32/64"	+0 -3/16"
TANK CUBIC CAPACITY		60	CU.m	2,118	CU.ft
MAXIMUM GROSS WEIGHT		13,100	kg	28,880	lb
TARE WEIGHT		13,100	kg	28,880	lb

NOTE . THIS DPRAWING AND THE COPYRIGHT THEPEIN APE THE PPROPERTY OF E T TD. THE DPRAWING MUST NOT BE USED, COPIED OP EXHIBITED WITHOUT THE WRITTEN PERMISSION OF TH-

ITEM	DRAWING NO.	DESCRIPTION	Q'TY	MATERIAL (SIZE)	REMARK
TITLE: 40' ISO TANKTAINER EXTERIOR ELEVATIONS					COMPANY:
DRAWING NO.: 40.00.00.00.0					PROJECTION:
MARK	Q'TY	AREA	REV/FILE NO.	SIGNATURE	DATE
DESIGNED			TECHNIQUE		
CHECKED			APPROVED		
WT (kg)		Q'TY	SCALE	EDITION	PAGE
					1/2



ITEM	DRAWING NO.	DESCRIPTION	Q'TY	MATERIAL (SIZE)	REMARK
TITLE: 40' ISO TANKTAINER EXTERIOR REAR, SIDE & SECTION VIEWS					COMPANY:
DRAWING NO.: 40.00.00.00.0					PROJECTION:
MARK	Q'TY	AREA	REV/FILE NO.	SIGNATURE	DATE
DESIGNED			TECHNIQUE		
CHECKED			APPROVED		
WT (kg)			Q'TY	SCALE	EDITION
					PAGE
					2/2

NOTE : THIS DRAWING AND THE COPYRIGHT THEREIN ARE THE PROPERTY OF F S A C . THE DRAWING MUST NOT BE USED, COPIED OR EXHIBITED WITHOUT THE WRITTEN PERMISSION OF E A C ,